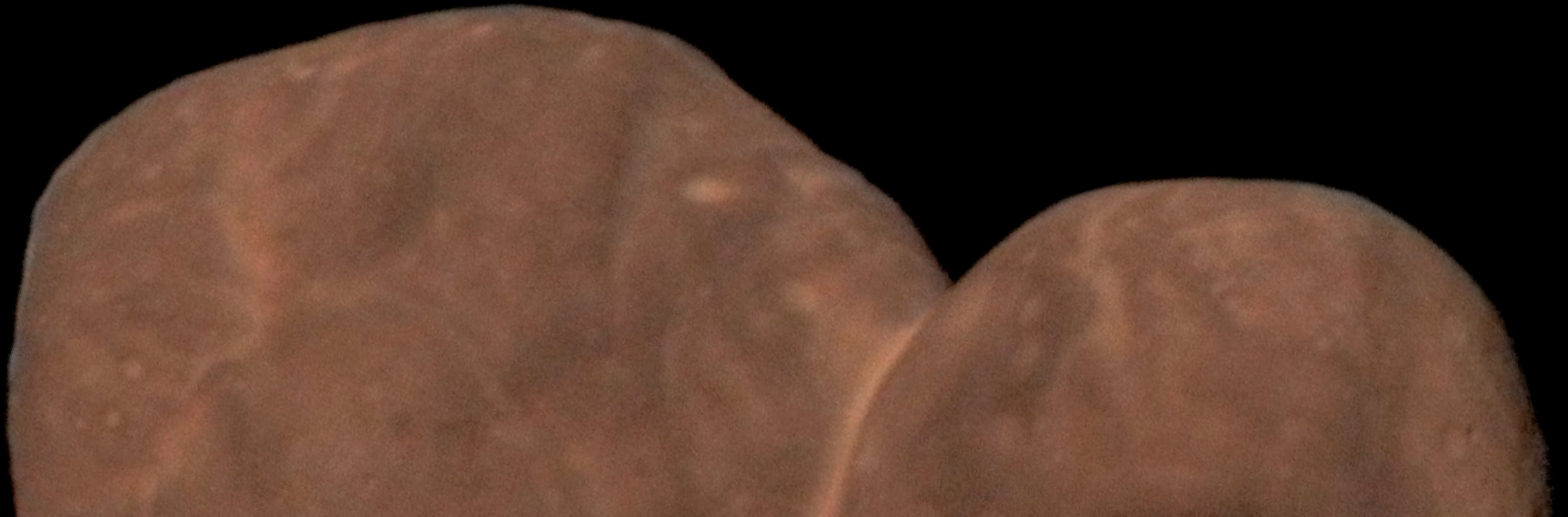


# The Formation of Kuiper Belt Object Arrokoth

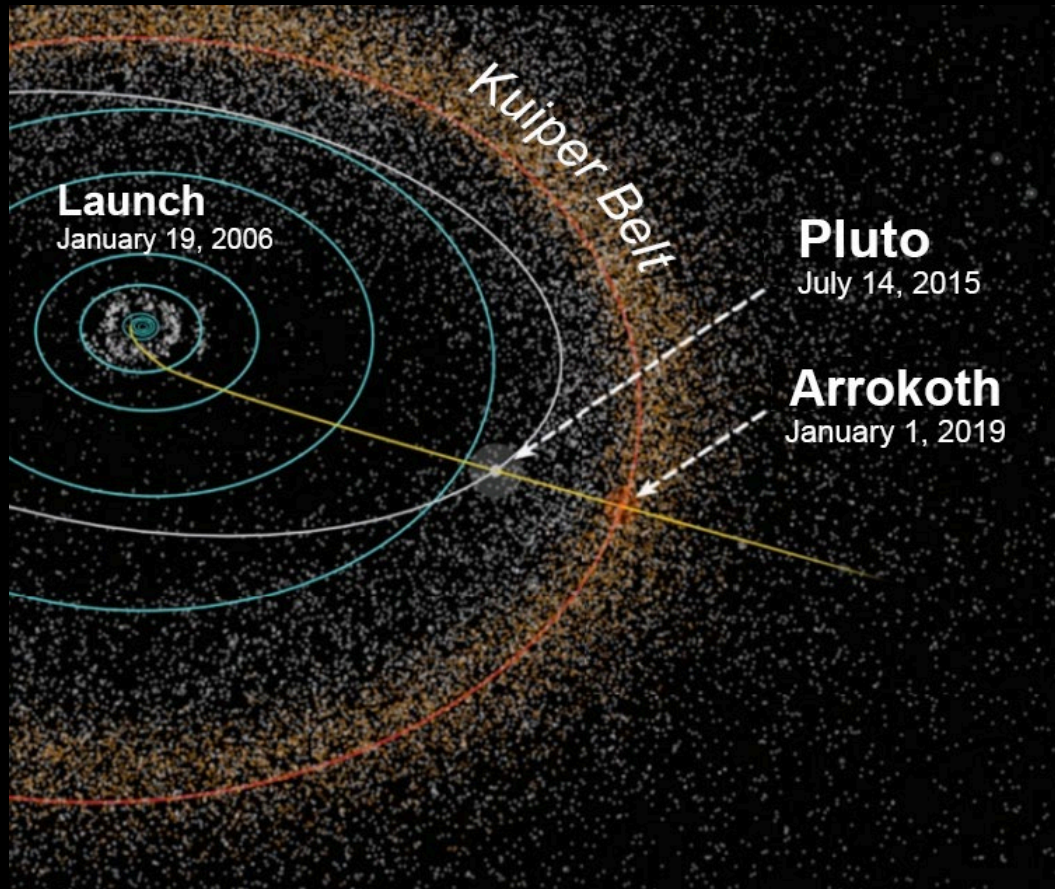
Alan Stern

New Horizons Principal Investigator, Southwest Research Institute



# The Exploration of Arrokoth

- Most primitive body ever explored.
- It is a contact binary planetesimal.
- Formed by gentle accretion.

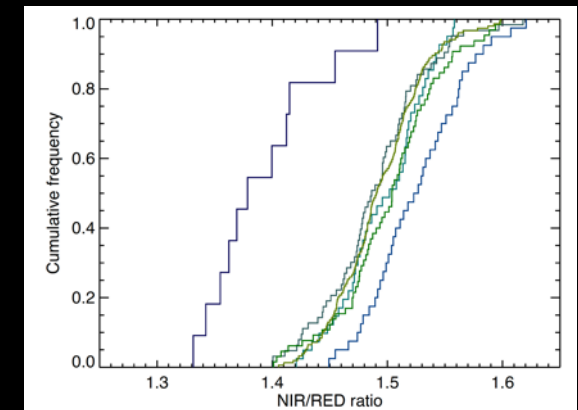
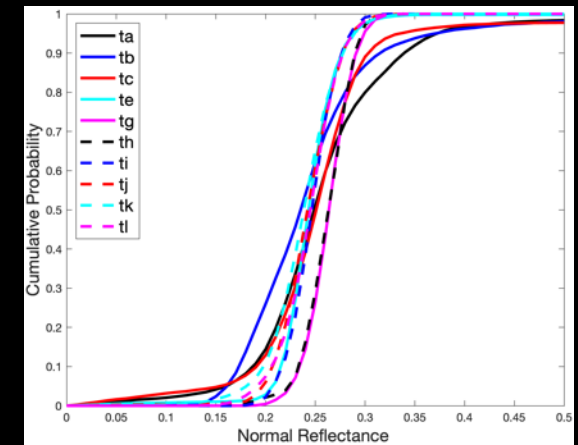
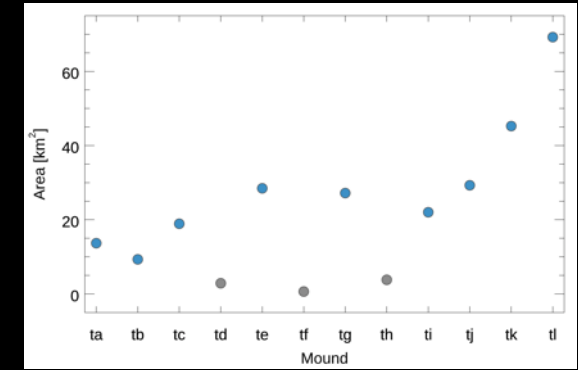
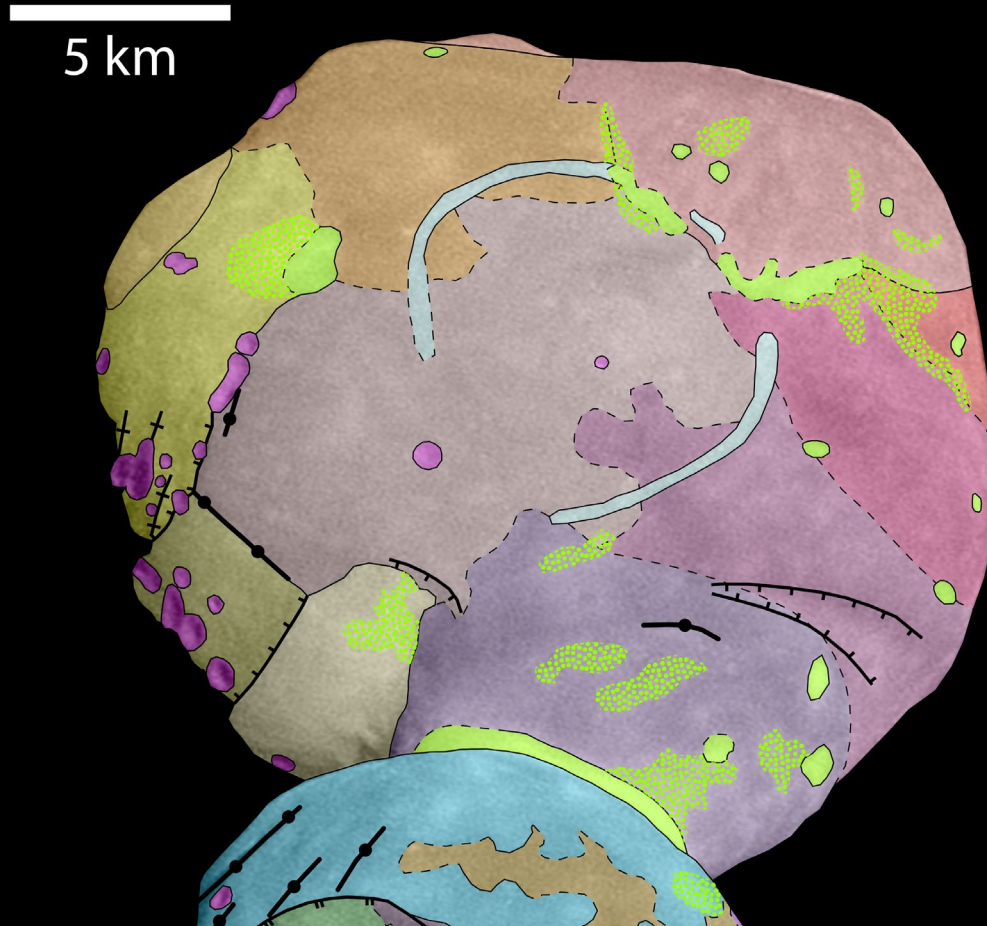


**33 km**  
**21 mi**



# Arrokoth's Large Mounds

- We have studied Arrokoth in a variety of new ways.
- We focused on the enigmatic, large “mounds” on its larger lobe.
- And found them to be remarkably similar.





# Origin of the Mounds

- The mounds appear to be consistent with evidence of like-sized accretionary subunits.
- Providing crucial new clues to understanding how planetesimals formed.

